

PRIMEX HVAC VENTING

Product Specification Sheet



PRODUCT
MODEL CODE

WCX Series

Extended Brick Wall Cap

1. PRODUCT SUMMARY

The Primex Extended Brick Wall Cap Series (WCX) increases the depth of the wall cap for use on the outside of brick and masonry structures.

Available in 4", 5", and 6" sizes, this rainscreen compatible unit provides excellent, long term water protection.

2. PRODUCT DIMENSIONS

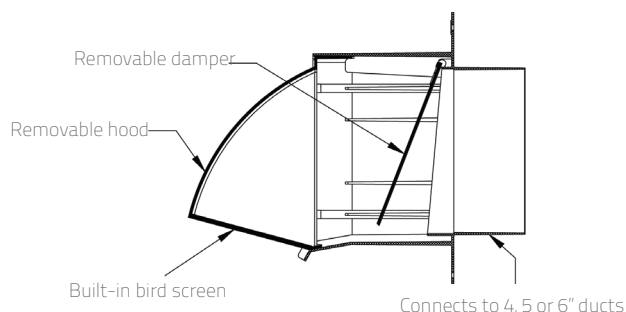
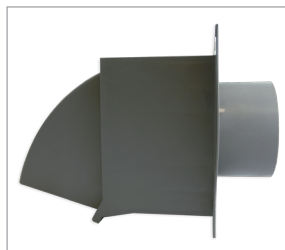
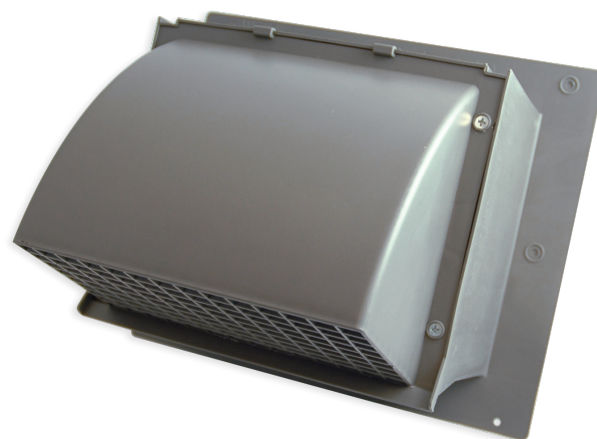
HOOD SIZE: H: 7.8" / W: 8.1" / D: 4.5"

3. FEATURES & BENEFITS

- Suitable for brick and masonry walls and intake or exhaust applications.
- Compatible with rainscreen applications via extended base, compensating for cavity between sheathing and brick.
- Eliminates leaky joints, while maximizing water protection with one-piece molded base, built-in drip edge and over-sized flange to ensure water-tight installation.
- Integrity of the building envelope is maintained via a removable hood for simple cleaning or replacement.
- Made with UV-protected Polymer resin for lasting durability.
- Highly resistant to mechanical impact and includes a built-in bird screen.
- Quick and easy installation.
- Hoods match WC Series wall caps.

4. COLOURS

- | | |
|-----------------|----------------|
| ▪ Dark Brown 68 | ▪ Taupe 23 |
| ▪ Light Grey 31 | ▪ Black 25 |
| ▪ Snow White 01 | ▪ Dark Grey 28 |
| ▪ Tan 45 | |



FOR MORE INFORMATION CONTACT:

20160 92A Avenue Langley BC V1M 3A4 Canada
📞 1.877.881.7875 📧 info@primexfits.com primexfits.com

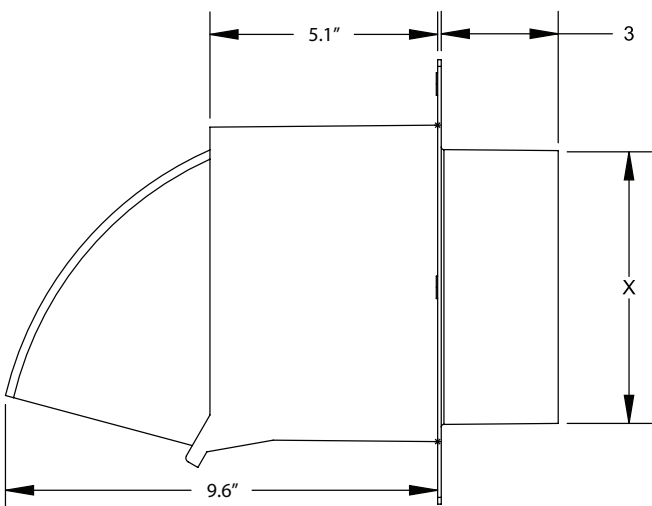
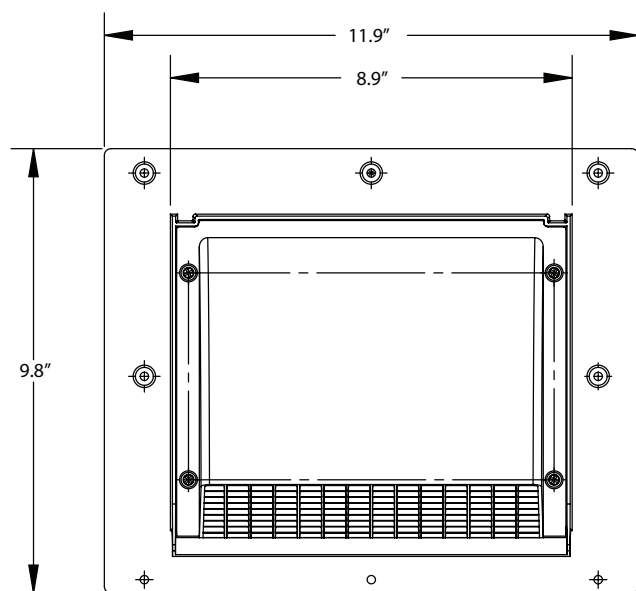
primex  **Fit everything. Together.**



5. SIZING/PART NUMBER

EXTENDED WALL CAPS				
PART NUMBER	COLLAR SIZE	FREE AREA	DESCRIPTION	PKG
WCX4	4"	12.6"	4" extended wall cap	6/box
WCX5	5"	19.6"	5" extended wall cap	6/box
WCX6	6"	28.3"	6" extended wall cap	6/box

6. TECHNICAL DRAWINGS



X: Available for 4", 5" or 6" duct.

FOR MORE INFORMATION CONTACT:

20160 92A Avenue Langley BC V1M 3A4 Canada
1.877.881.7875 info@primexfits.com primexfits.com